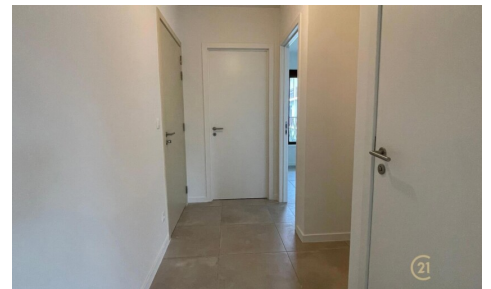


## FOR RENT - FLAT

Dorp 20 B4, 2360 Oud-Turnhout

€ 920

Ref. 2081 AK



Number of bedrooms: 1  
Number of bathrooms: 1  
Availability: at delivery

Surf. Living: 73m<sup>2</sup>  
Neighbourhood: central

PEB/EPB: 15kwh/m<sup>2</sup>/j

## DESCRIPTION

Discover this beautiful 1-bedroom apartment, perfectly located in the heart of the cozy Oud-Turnhout.

Upon entering you immediately notice the abundance of natural light, the open kitchen is fully equipped and offers the perfect space for cooking and socializing. Adjacent to the open living space you will find the covered terrace, where in the middle of life you have a view of the village center.

The apartment is energy-efficiently designed, which not only contributes to a sustainable lifestyle, but also helps to keep energy costs low. The practical layout includes a fine bathroom with a modern walk-in shower, providing extra comfort.

One of the great advantages of this apartment is the practical underground car parking space. This is included in the rent, with the possibility of renting a second parking space in addition, which is ideal for visitors or a 2nd car.

The location of the apartment could not be better: right in the middle of the lively center of Oud-Turnhout, with all the stores and terraces within walking distance. This allows you to enjoy everything this lively neighborhood has to offer.

Contact us today for more information or to schedule a viewing. Don't miss this opportunity to live in a comfortable, well located and energy efficient home!

---

## FINANCIAL

Price: € 920,00 per month

Available: At delivery

Available date: 31 August 2025

## BUILDING

Habitable surface: 73,00 m²

Construction year: 2022

State: New

## COMFORT

Furnished: No

Handicap friendly: Yes

Elevator: Yes

## ENERGY

EPC score: 15

EPC code: 10000-A-

OVM\_2021083627/EP19645/A001//D03/SD006

EPC class: A

Double glazing: Yes

Electricity certificate: Yes, conform

Heating: Individual

## LOCATION

Environment: Central, city Center

School nearby: Yes

Shops nearby: 10m

Public transport nearby: 20m

## TERRAIN

Garden: No

Orientation terrace 1: South-west

## LAYOUT

Living room: 20,60 m²

Dining room: 11,00 m²

Kitchen: Yes, US fully fitted

Bedroom 1: 12,70 m²

Bathroom type: Shower

Shower rooms: 1

Toilets: 1

Laundry: Yes

## TECHNICS

Electricity: Yes

Phone cables: Yes

Cable TV: Yes

Gas: Yes

Water: Yes

## **PARKING**

Parkings inside: Yes